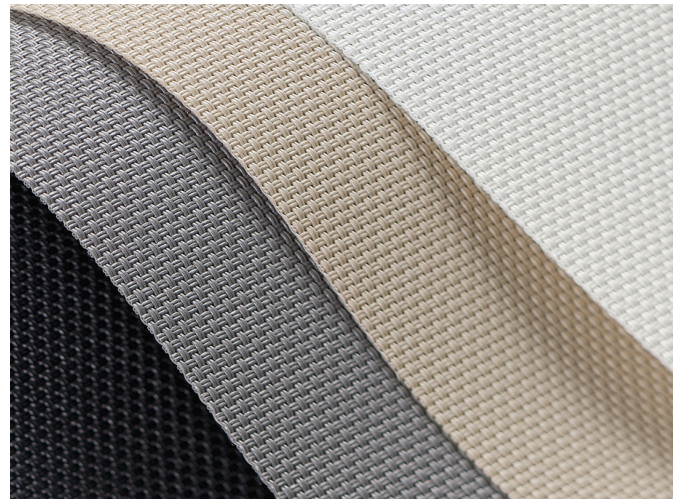


BASICSCREEN 1%, 5%, 10%







- Screen fabric with superior light control characteristics to minimise glare
- Offered in 3 openness factors to suit all building orientations
- Standard 100 by Oeko-Tex® certified, free from harmful substances
- Greenguard® certification for low-emission products
- Certified mould resistance













APPLICATIONS



FABRIC PROPERTIES

	1%	5%	10%
	Semi transparent		
	30% Polyester, 70% PVC		
	480 g/m ²	410 g/m ²	340 g/m ²
	0.65 mm	0.55 mm	0.50 mm
	245 cm		
	250 cm		

FEATURES / TECHNICAL PROPERTIES

	5-6
	Flame retardant
	Optimised for workstations
	Various openness factors
	Antimicrobial (ASTM - SGS)
	Applicable in humid areas
	Digital printing
	Oeko-Tex, Greenguard
	Special colours from 5'000 m
	Weldable

WASHING INSTRUCTIONS



FLAME RETARDANT

B-s2,d0 (EN 13501-1)
 Class 1 (UNI 9176/77)
 Type B (BS 5867-2)
 NFPA 701



Basicscreen 1%, 5%, 10%
OPTICAL AND SOLAR COEFFICIENTS ($\pm 5\%$, DIN EN 410)

Basicscreen 1%							
Colour	T_V	T_S	R_S	A_S	T_{UV}	F_C	g_{tot}
3001	16.8	20.9	63.6	15.5	2.5	0.53	0.38
3006	2.4	4.3	20.0	75.7	1.9	0.79	0.57
3007	2.9	2.9	3.3	93.8	2.9	0.90	0.65
3015	9.0	14.9	45.2	39.9	2.2	0.64	0.46

Basicscreen 5%							
Colour	T_V	T_S	R_S	A_S	T_{UV}	F_C	g_{tot}
3001	20.3	24.4	60.5	15.1	7.5	0.55	0.40
3006	8.0	10.1	20.3	69.6	7.5	0.80	0.57
3007	7.2	7.2	3.4	89.4	7.2	0.90	0.65
3015	14.4	20.0	43.7	36.3	7.6	0.66	0.47

Basicscreen 10%							
Colour	T_V	T_S	R_S	A_S	T_{UV}	F_C	g_{tot}
3001	28.3	32.0	55.3	12.7	14.9	0.59	0.43
3006	16.0	18.3	18.0	63.7	15.3	0.82	0.59
3007	16.3	16.3	3.1	80.6	16.2	0.91	0.66
3015	22.4	27.8	28.5	43.7	14.2	0.76	0.55

T_V Visible light transmission

R_S Solar reflectance

T_{UV} UV transmission

g_{tot} Total g-value

T_S Solar transmission

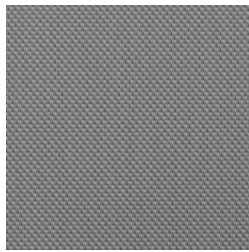
A_S Solar absorption

F_C Shading factor

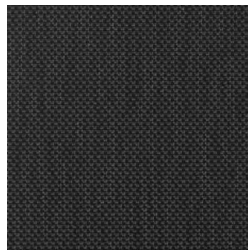
$F_C + g_{tot}$: Value calculated with glass: $0.72 / U_g = 1.6 \text{ W/m}^2 \text{ K}$, DIN EN 13363-1

Basicscreen 1%, 5%, 10%

3001 (1%)



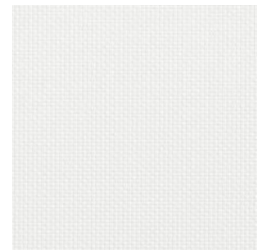
3006 (1%)



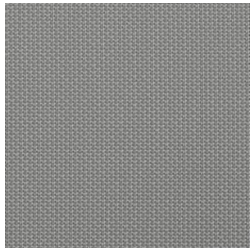
3007 (1%)



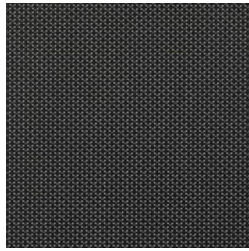
3015 (1%)



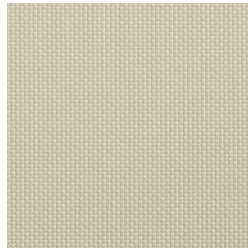
3001 (5%)



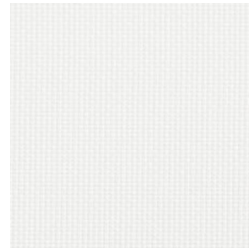
3006 (5%)



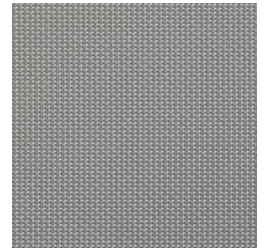
3007 (5%)



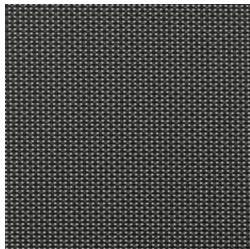
3015 (5%)



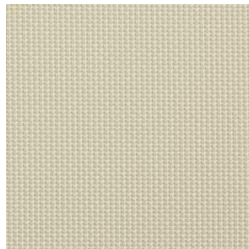
3001 (10%)



3006 (10%)



3007 (10%)



3015 (10%)

Colours shown are not binding