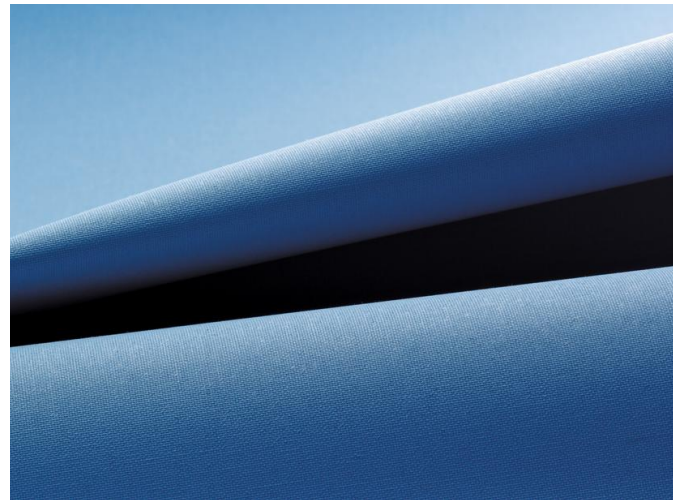


## ELEMENT

- Classic dimout fabric with a colour matched reverse for a uniform appearance inside and out
- Standard 100 by Oeko-Tex® certified, free from harmful substances

### APPLICATIONS




### FABRIC PROPERTIES


 Dimout

 Polyester acrylic-coated

 220 g/m<sup>2</sup>

 0.30 mm

 ←max.→ 235 cm, 295 cm (01, 02, 04, 17)

 12.7 cm, 240 cm, 300 cm (01, 02, 04, 17)

### FEATURES / TECHNICAL PROPERTIES

 5-6

 Flame retardant

 Digital printing

 Oeko-Tex

 Special colours from 500 m

### WASHING INSTRUCTIONS



### FLAME RETARDANT

B-s2,d0 (EN 13501-1)

B1 (DIN 4102-1)

M1 (NF P 92-503/5/7)

Type B (BS 5867-2)



Element

OPTICAL AND SOLAR COEFFICIENTS ( $\pm 5\%$ , DIN EN 410)



Colour	$T_V$	$T_S$	$R_S$	$A_S$	$T_{UV}$	$F_C$	$g_{tot}$
01	15.0	17.0	73.0	10.0	2.0	0.47	0.34
02	5.0	10.0	51.0	39.0	0.00	0.60	0.43
04	13.0	17.0	63.0	20.0	0.00	0.53	0.38
15	3.0	10.0	55.0	35.0	0.00	0.58	0.41
17	0.5	0.5	19.0	80.5	0.00	0.80	0.58
18	3.0	2.0	36.0	62.0	0.00	0.69	0.50
23	0.5	6.0	37.0	57.0	0.00	0.69	0.49

$F_c + g_{tot}$ : Value calculated with glass:  $0.72 / U_g = 1.6 \text{ W/m}^2 \text{ K}$ , DIN EN 13363-1

Element

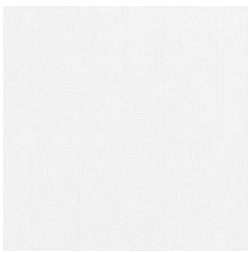
CLASSIFICATION OF SOLAR SHADING DEVICES (DIN EN 14501:2021)



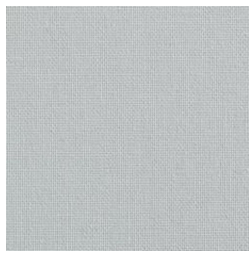
Colour	Glare control	Privacy at night	Sight contact with the outside	Daylight utilisation
01	3	3	0	2
02	4	3	0	1
04	3	3	0	2
15	4	4	0	1
17	4	4	0	0
18	4	4	0	1
23	4	4	0	0

0: No effect, 1: Low effect, 2: Medium effect, 3: High effect, 4: Very high effect

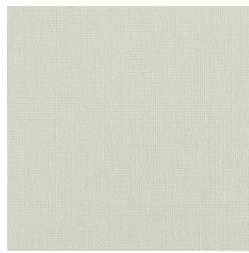
Element



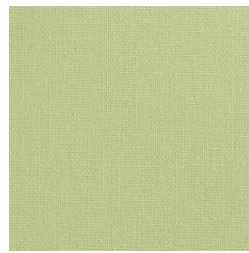
01



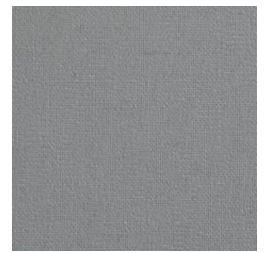
02



04



15



17



18



23

Colours shown are not binding