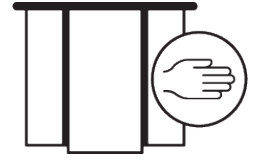
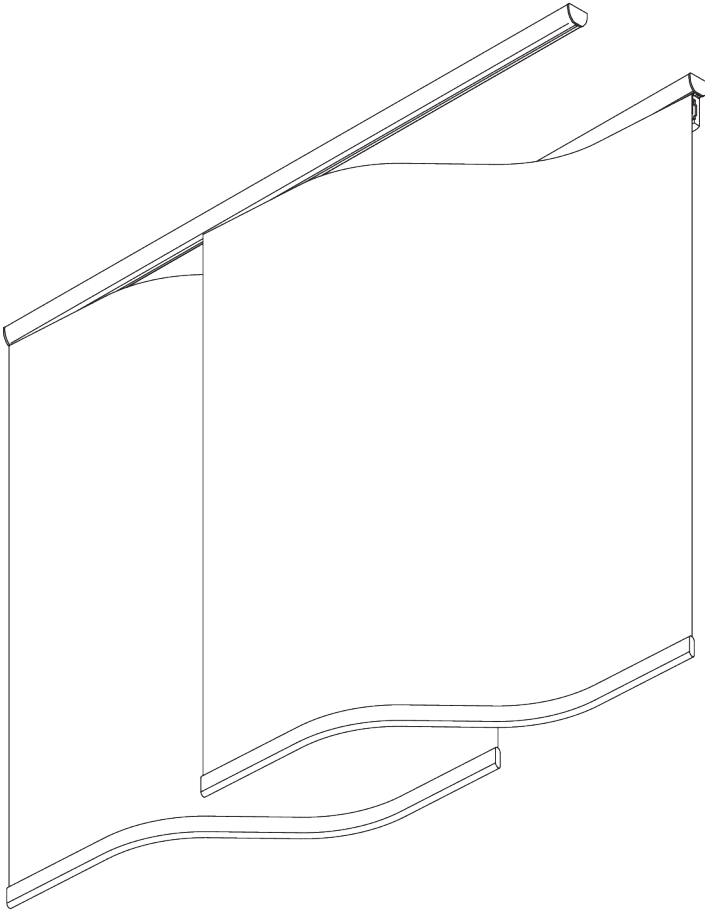


SG 2740



WAVE PANEL



PRODUCT INFORMATION

- **Operation:** hand
- **Range:** S - L
- **Fitting:** ceiling
- **Colours:** white RAL 9016; special colours or anodised aluminum possible
- **Fabrics:** refer to Silent Gliss fabric collection

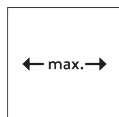
Features:

- Wave-shaped panels
- Easy click-in carrier for fast installation
- Free floating or connected panels

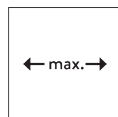
SYSTEM SPECIFICATIONS

A. SYSTEM DIMENSIONS

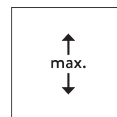
Fixed panel width: 50 cm



Panels free floating:
unlimited



Panels connected (max.
15 panels): 6.05 m



2.8 m



1 kg
incl. bottom bar per panel

Unconnected panels

| System length in cm | Number of panels | Given overlapping in cm |
|---------------------|------------------|-------------------------|
| 100 - 136 | 3 | 18.1 - 0.1 |
| 137 - 181 | 4 | 14.9 - 0.2 |
| 182 - 226 | 5 | 11.2 - 0.2 |
| 227 - 272 | 6 | 9.1 - 0.1 |
| 273 - 317 | 7 | 7.5 - 0.1 |
| 318 - 363 | 8 | 6.4 - 0.0 |
| 364 - 408 | 9 | 5.6 - 0.1 |
| 409 - 453 | 10 | 5.0 - 0.1 |
| 454 - 499 | 11 | 4.5 - 0.0 |
| 500 - 544 | 12 | 4.1 - 0.1 |
| 545 - 590 | 13 | 3.8 - 0.0 |
| 591 - 635 | 14 | 3.4 - 0.0 |
| 636 - 680 | 15 | 3.2 - 0.1 |

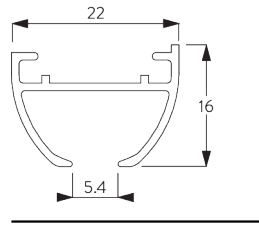
Connected panels

Max. 15 connected
panels!

| System length in cm | Number of panels | Width of all panels together (cm) |
|---------------------|------------------|-----------------------------------|
| 100 - 125 | 3 | 125 |
| 126 - 165 | 4 | 165 |
| 166 - 205 | 5 | 205 |
| 206 - 245 | 6 | 245 |
| 246 - 285 | 7 | 285 |
| 286 - 325 | 8 | 325 |
| 326 - 365 | 9 | 365 |
| 366 - 405 | 10 | 405 |
| 406 - 445 | 11 | 445 |
| 446 - 485 | 12 | 485 |
| 486 - 525 | 13 | 525 |
| 526 - 565 | 14 | 565 |
| 566 - 605 | 15 | 605 |

B. PROFILE

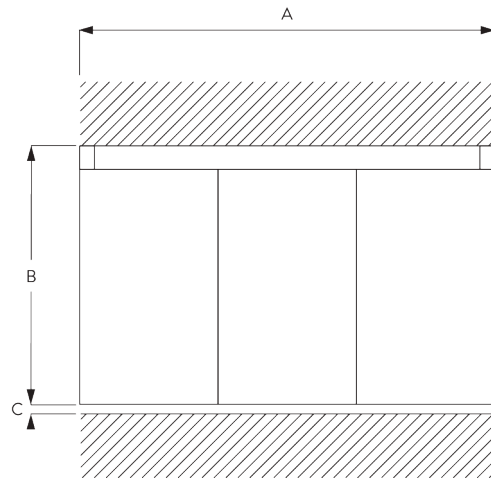
Profile information



SG 6010p

Profile

C. HOW TO MEASURE

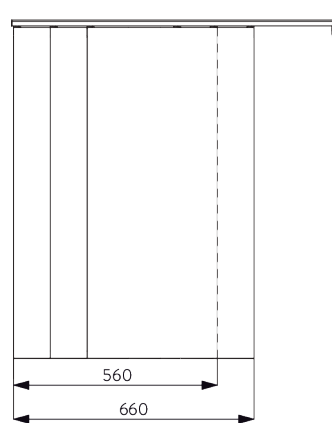


A: System width

B: System height

C: Distance between floor and fabric

Panel stacking



2 panels: 560 mm

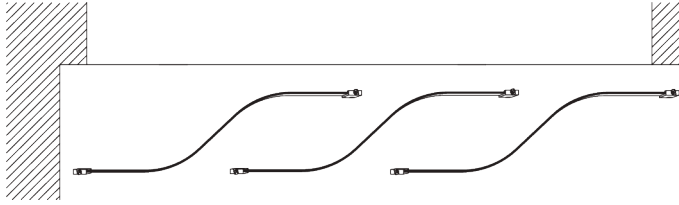
3 panels: 660 mm

4 panels: 760 mm

5 panels: 860 mm

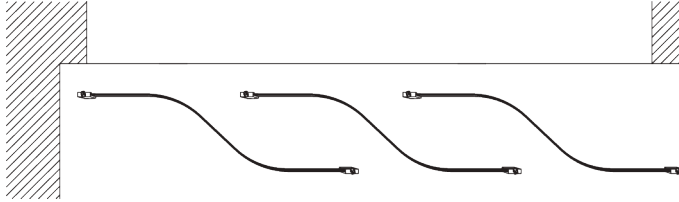
Each subsequent panel plus 100 mm

Panel opening



Carrier A (standard)

Opening between panels is to the left of the room.



Carrier B (option)

Opening between panels is to the right of the room.

D. SPECIFICATION

TEXT

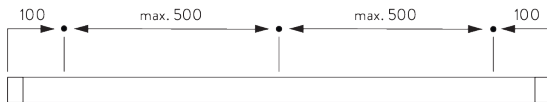
Silent Gliss SG 2740 Wave Panel System. Supplied made to measure and complete comprising twin tracks SG 6010 with left carrier SG 11104 / right carrier SG 11109, click glider SG 11162 and bottom weight SG 11107. Fabric panels stack right hand / left hand. Hand operated with panels unconnected / connected. Ceiling fixed using clamps SG 3825. Fabric to be chosen from Silent Gliss fabric collection, Price Group 1 / 2 / 3.

FITTING

A. FITTING INFORMATION

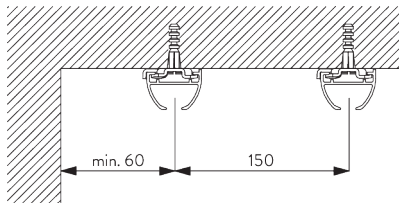
For detailed fitting information, visit the [Silent Gliss website](#).

Fixing points

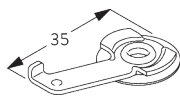


B. CEILING FITTING

Clamp SG 3825



Distance between profiles: 15 cm



SG 3825

Clamp

PARTS

A. STANDARD PARTS



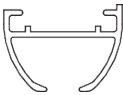
SG 2539

Tape



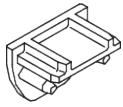
SG 3825

Clamp



SG 6010p

Profile



SG 6018

End cover



SG 11104

S-Carrier right Type A



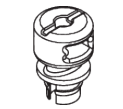
SG 11107

Bottom weight



SG 11161

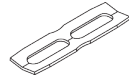
Glider cord 40 cm



SG 11162

Click glider

B. OPTIONAL PARTS



SG 3802

Connection bridge



SG 11109

S-Carrier left Type B

